

AVERAGE WEEKLY EARNINGS

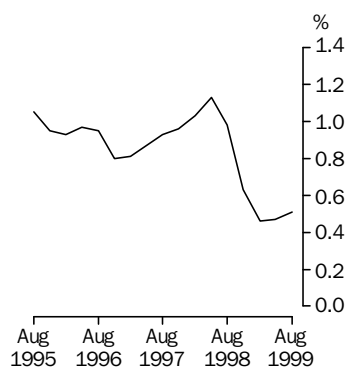
STATES AND
AUSTRALIA

EMBARGO: 11:30AM (CANBERRA TIME) THURS 18 NOV 1999

AUGUST 1999 KEY FIGURES

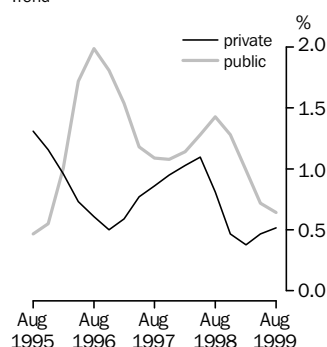
Full-time adult total earnings

Quarterly percentage change
Trend



Full-time adult total earnings

Quarterly percentage change
Trend



TREND ESTIMATES

	August 99 \$	May 1999 to Aug 1999 % change	Aug 1998 to Aug 1999 % change
Australia			
Full-time adult ordinary time earnings	753.70	0.6	2.5
Full-time adult total earnings	793.10	0.5	2.1
All employees total earnings	609.60	0.2	1.3
Private sector			
Full-time adult ordinary time earnings	725.10	0.7	2.4
Full-time adult total earnings	766.10	0.5	1.9
Public sector			
Full-time adult ordinary time earnings	847.50	0.7	3.8
Full-time adult total earnings	881.00	0.6	3.7

SEASONALLY ADJUSTED ESTIMATES

Australia			
Full-time adult ordinary time earnings	753.20	0.3	2.1
Full-time adult total earnings	792.50	0.2	1.7
All employees total earnings	607.10	-0.9	0.4
Private sector			
Full-time adult ordinary time earnings	723.60	-0.1	1.8
Full-time adult total earnings	764.50	-0.2	1.3
Public sector			
Full-time adult ordinary time earnings	848.60	1.2	3.9
Full-time adult total earnings	881.70	1.0	3.8

AUGUST 1999 KEY POINTS

TREND ESTIMATES

- At the Australian level, average weekly earnings for all categories of employees continued to grow during the three months to August 1999.
- Full-time adult ordinary time earnings for males and females rose by 2.0% and 3.3% respectively in the twelve months to August 1999.
- In the twelve months to August 1999, full-time adult total earnings for males and females rose by 1.5% and 3.3% respectively.
- Full-time adult ordinary time earnings for the private and public sectors rose by 2.4% and 3.8% respectively in the twelve months to August 1999.

TAKE CARE!
For effects of
compositional change
see paragraphs 10 & 11
of the Explanatory Notes.

- For further information about these and related statistics, contact Brad Pottinger on Perth 08 9360 5304 or any ABS office shown on the back of this publication.

NOTES

FORTHCOMING ISSUES

REFERENCE PERIOD

EXPECTED RELEASE DATE

November 1999

2 March 2000

February 2000

18 May 2000

.....

RELATED ISSUES

Average Weekly Earnings, Australia, Preliminary (Cat. no. 6301.0)

REFERENCE PERIOD

EXPECTED RELEASE DATE

November 1999

11 February 2000

February 2000

27 April 2000

.....

NOTES ON ESTIMATES

Movements in average weekly earnings can be affected by both changes in the level of earnings per employee and changes in the composition of the labour force. For example, changes in the proportions of full-time, part-time, casual and junior employees and variations in the distribution of occupations can affect movements in earnings series. Refer to paragraphs 10 and 11 of the Explanatory Notes.

.....

SAMPLING ERRORS

For information on sampling errors see the Technical Notes at the end of this publication. Standard errors for the original estimates contained in this publication are in tables A, B and C of the Technical Notes.

.....

W. McLennan
Australian Statistician

CONTENTS

page

EDITORIAL

Notes	2
-------------	---

TABLES

Average Weekly Earnings

1	Australia: Trend	4
2	Australia: Seasonally Adjusted	5
3	Australia: Original	6
4	Private Sector, Australia: Trend	7
5	Private Sector, Australia: Seasonally Adjusted	8
6	Private Sector, Australia: Original	9
7	Public Sector, Australia: Trend	10
8	Public Sector, Australia: Seasonally Adjusted	11
9	Public Sector, Australia: Original	12
10	Industry, Australia: Original	13
11	States and Territories: Trend	14
12	States and Territories: Seasonally Adjusted	16
13	States and Territories: Original	18
14	Quarterly Percentage Change, States and Territories: Trend	20
15	Quarterly Percentage Change, States and Territories: Seasonally Adjusted .	21
16	Quarterly Percentage Change, States and Territories: Original	22
17	Annual Percentage Change, States and Territories: Trend	23

ADDITIONAL INFORMATION

Explanatory notes	24
Technical notes	28
Special data service	32
Glossary	33

AVERAGE WEEKLY EARNINGS, Australia: **Trend**

Reference period	MALES.....			FEMALES.....			PERSONS.....		
	Full-time adult ordinary time earnings	Full-time adult total earnings	All males total earnings	Full-time adult ordinary time earnings	Full-time adult total earnings	All females total earnings	Full-time adult ordinary time earnings	Full-time adult total earnings	All employees total earnings
DOLLARS									
1998									
May	775.80	832.60	718.10	647.20	661.10	470.50	728.30	769.40	598.90
August	782.80	839.90	720.70	654.50	668.40	473.50	735.60	776.90	602.00
November	787.70	844.30	723.60	660.90	674.90	477.00	741.00	781.80	605.10
1999									
February	791.40	847.00	726.60	666.20	680.40	479.30	745.20	785.40	607.00
May	795.00	849.50	729.80	671.10	685.40	480.90	749.30	789.10	608.50
August	798.60	852.20	732.80	675.90	690.40	482.10	753.70	793.10	609.60
PERCENTAGE CHANGE (from previous quarter)									
1998									
May	1.1	1.1	0.7	1.1	1.0	0.6	1.1	1.1	0.7
August	0.9	0.9	0.4	1.1	1.1	0.6	1.0	1.0	0.5
November	0.6	0.5	0.4	1.0	1.0	0.7	0.7	0.6	0.5
1999									
February	0.5	0.3	0.4	0.8	0.8	0.5	0.6	0.5	0.3
May	0.5	0.3	0.4	0.7	0.7	0.3	0.6	0.5	0.2
August	0.5	0.3	0.4	0.7	0.7	0.3	0.6	0.5	0.2
PERCENTAGE CHANGE (from corresponding quarter of previous year)									
1997									
August	4.2	3.6	3.2	4.2	4.0	3.8	4.0	3.4	3.0
1998									
August	4.1	4.1	3.3	4.4	4.2	2.4	4.2	4.2	2.8
1999									
August	2.0	1.5	1.7	3.3	3.3	1.8	2.5	2.1	1.3

AVERAGE WEEKLY EARNINGS, Australia: **Seasonally Adjusted**

Reference period	MALES.....			FEMALES.....			PERSONS.....		
	Full-time adult ordinary time earnings	Full-time adult total earnings	All males total earnings	Full-time adult ordinary time earnings	Full-time adult total earnings	All females total earnings	Full-time adult ordinary time earnings	Full-time adult total earnings	All employees total earnings
DOLLARS									
1998									
May	774.20	830.60	716.30	646.70	660.50	468.90	726.90	768.10	597.30
August	784.90	842.50	724.10	654.40	668.00	474.90	737.50	779.00	604.50
November	789.10	845.60	721.70	661.40	675.70	477.60	741.50	782.20	604.60
1999									
February	786.70	842.10	724.00	667.10	681.30	477.30	743.10	783.10	604.70
May	799.60	854.20	734.80	669.40	683.50	483.70	750.90	790.90	612.30
August	796.60	850.10	729.40	677.00	691.80	480.40	753.20	792.50	607.10
PERCENTAGE CHANGE (from previous quarter)									
1998									
May	0.8	0.7	0.5	0.9	0.8	0.4	0.9	0.9	0.6
August	1.4	1.4	1.1	1.2	1.1	1.3	1.5	1.4	1.2
November	0.5	0.4	-0.3	1.1	1.2	0.6	0.5	0.4	0.0
1999									
February	-0.3	-0.4	0.3	0.9	0.8	-0.1	0.2	0.1	0.0
May	1.6	1.4	1.5	0.4	0.3	1.3	1.1	1.0	1.3
August	-0.4	-0.5	-0.7	1.1	1.2	-0.7	0.3	0.2	-0.9
PERCENTAGE CHANGE (from corresponding quarter of previous year)									
1997									
August	4.7	4.3	3.0	4.6	4.4	3.4	4.4	4.0	2.7
1998									
August	4.0	3.9	4.0	4.2	3.9	2.9	4.1	4.0	3.5
1999									
August	1.5	0.9	0.7	3.5	3.6	1.2	2.1	1.7	0.4

AVERAGE WEEKLY EARNINGS, Australia: **Original**

Reference period	MALES.....			FEMALES.....			PERSONS.....		
	Full-time adult ordinary time earnings	Full-time adult total earnings	All males total earnings	Full-time adult ordinary time earnings	Full-time adult total earnings	All females total earnings	Full-time adult ordinary time earnings	Full-time adult total earnings	All employees total earnings
DOLLARS									
1998									
May	773.20	829.90	714.50	646.90	660.60	468.30	726.90	767.80	596.20
August	784.30	839.60	721.80	653.10	666.50	473.80	736.10	776.00	602.90
November	788.30	848.60	722.80	661.40	676.70	476.00	741.30	784.90	603.70
1999									
February	789.10	842.70	727.00	668.20	681.70	480.50	744.80	783.70	608.40
May	798.40	853.40	733.00	669.60	683.50	483.00	750.80	790.60	611.10
August	796.20	847.30	727.10	675.70	690.30	479.30	751.80	789.50	605.40
PERCENTAGE CHANGE (from previous quarter)									
1998									
May	0.4	0.6	-0.2	0.8	0.7	-0.4	0.6	0.8	-0.2
August	1.4	1.2	1.0	1.0	0.9	1.2	1.3	1.1	1.1
November	0.5	1.1	0.1	1.3	1.5	0.5	0.7	1.1	0.1
1999									
February	0.1	-0.7	0.6	1.0	0.7	1.0	0.5	-0.2	0.8
May	1.2	1.3	0.8	0.2	0.3	0.5	0.8	0.9	0.4
August	-0.3	-0.7	-0.8	0.9	1.0	-0.8	0.1	-0.1	-0.9
PERCENTAGE CHANGE (from corresponding quarter of previous year)									
1997									
August	4.7	4.3	3.0	4.6	4.4	3.4	4.4	4.0	2.7
1998									
August	4.1	3.9	4.0	4.2	3.9	3.0	4.2	4.0	3.6
1999									
August	1.5	0.9	0.7	3.5	3.6	1.2	2.1	1.7	0.4

AVERAGE WEEKLY EARNINGS, Private Sector—Australia: **Trend**

Reference period	MALES.....			FEMALES.....			PERSONS.....		
	Full-time adult ordinary time earnings	Full-time adult total earnings	All males total earnings	Full-time adult ordinary time earnings	Full-time adult total earnings	All females total earnings	Full-time adult ordinary time earnings	Full-time adult total earnings	All employees total earnings
DOLLARS									
1998									
May	754.20	813.30	687.00	605.80	620.30	423.60	702.50	746.10	563.10
August	759.60	818.90	687.90	611.50	626.00	425.40	708.20	752.10	564.50
November	763.00	821.70	689.90	616.70	631.30	428.90	712.30	755.60	567.10
1999									
February	766.10	823.70	693.10	621.90	636.60	431.90	716.00	758.50	569.50
May	770.10	826.20	697.10	627.00	641.80	433.80	720.40	762.10	571.60
August	774.50	828.90	700.90	631.80	646.80	434.60	725.10	766.10	573.20
PERCENTAGE CHANGE (from previous quarter)									
1998									
May	1.1	1.1	0.6	1.1	1.0	0.3	1.1	1.1	0.5
August	0.7	0.7	0.1	0.9	0.9	0.4	0.8	0.8	0.2
November	0.5	0.3	0.3	0.8	0.8	0.8	0.6	0.5	0.5
1999									
February	0.4	0.2	0.5	0.8	0.8	0.7	0.5	0.4	0.4
May	0.5	0.3	0.6	0.8	0.8	0.4	0.6	0.5	0.4
August	0.6	0.3	0.6	0.8	0.8	0.2	0.7	0.5	0.3
PERCENTAGE CHANGE (from corresponding quarter of previous year)									
1997									
August	3.9	3.1	2.8	3.8	3.6	3.7	3.5	2.8	2.6
1998									
August	3.9	3.8	3.0	4.4	4.1	1.8	4.1	3.9	2.3
1999									
August	2.0	1.2	1.9	3.3	3.3	2.2	2.4	1.9	1.5

AVERAGE WEEKLY EARNINGS, Private Sector—Australia: **Seasonally Adjusted**

Reference period	MALES.....			FEMALES.....			PERSONS.....		
	Full-time adult ordinary time earnings	Full-time adult total earnings	All males total earnings	Full-time adult ordinary time earnings	Full-time adult total earnings	All females total earnings	Full-time adult ordinary time earnings	Full-time adult total earnings	All employees total earnings
DOLLARS									
1998									
May	753.10	812.30	685.20	606.40	621.00	422.90	701.70	745.50	561.80
August	762.50	821.70	692.20	611.20	625.20	425.90	710.50	754.40	567.30
November	764.20	823.40	686.80	616.50	631.80	429.50	712.40	756.20	565.60
1999									
February	758.90	816.00	689.90	621.90	636.30	429.30	712.30	754.10	566.70
May	777.30	834.20	703.80	627.30	642.00	438.70	724.00	766.30	577.30
August	771.50	825.30	696.40	631.50	646.80	431.10	723.60	764.50	569.30
PERCENTAGE CHANGE (from previous quarter)									
1998									
May	1.1	1.0	0.5	1.1	1.0	0.4	1.0	1.1	0.6
August	1.2	1.2	1.0	0.8	0.7	0.7	1.3	1.2	1.0
November	0.2	0.2	-0.8	0.9	1.1	0.9	0.3	0.2	-0.3
1999									
February	-0.7	-0.9	0.4	0.9	0.7	-0.1	0.0	-0.3	0.2
May	2.4	2.2	2.0	0.9	0.9	2.2	1.6	1.6	1.9
August	-0.7	-1.1	-1.1	0.7	0.7	-1.7	-0.1	-0.2	-1.4
PERCENTAGE CHANGE (from corresponding quarter of previous year)									
1997									
August	4.3	3.9	2.5	4.2	3.8	3.0	4.0	3.5	2.1
1998									
August	4.0	3.7	4.1	4.1	3.8	2.1	4.1	3.8	3.2
1999									
August	1.2	0.4	0.6	3.3	3.5	1.2	1.8	1.3	0.3

AVERAGE WEEKLY EARNINGS, Private Sector—Australia: **Original**

Reference period	MALES.....			FEMALES.....			PERSONS.....		
	Full-time adult ordinary time earnings	Full-time adult total earnings	All males total earnings	Full-time adult ordinary time earnings	Full-time adult total earnings	All females total earnings	Full-time adult ordinary time earnings	Full-time adult total earnings	All employees total earnings
DOLLARS									
1998									
May	751.30	809.30	682.30	605.00	619.00	421.40	700.90	743.70	559.90
August	762.40	820.10	690.50	610.80	624.50	426.50	710.00	752.50	566.80
November	762.00	825.90	688.90	617.60	634.30	428.40	711.40	758.70	565.40
1999									
February	763.10	818.20	692.20	622.70	636.60	431.40	714.60	755.50	569.40
May	775.30	831.00	700.90	625.70	639.80	437.10	723.20	764.40	575.20
August	771.50	823.70	694.60	631.20	646.10	431.80	723.20	762.60	568.70
PERCENTAGE CHANGE (from previous quarter)									
1998									
May	0.3	0.3	-0.3	0.8	0.7	-0.4	0.6	0.6	-0.3
August	1.5	1.3	1.2	1.0	0.9	1.2	1.3	1.2	1.2
November	0.0	0.7	-0.2	1.1	1.6	0.4	0.2	0.8	-0.3
1999									
February	0.1	-0.9	0.5	0.8	0.3	0.7	0.4	-0.4	0.7
May	1.6	1.6	1.3	0.5	0.5	1.3	1.2	1.2	1.0
August	-0.5	-0.9	-0.9	0.9	1.0	-1.2	0.0	-0.2	-1.1
PERCENTAGE CHANGE (from corresponding quarter of previous year)									
1997									
August	4.4	3.9	2.5	4.2	3.8	3.0	4.0	3.5	2.1
1998									
August	4.0	3.7	4.1	4.1	3.8	2.1	4.1	3.8	3.2
1999									
August	1.2	0.4	0.6	3.3	3.5	1.2	1.9	1.3	0.3

AVERAGE WEEKLY EARNINGS, Public Sector—Australia: **Trend**

Reference period	MALES.....			FEMALES.....			PERSONS.....		
	Full-time adult ordinary time earnings	Full-time adult total earnings	All males total earnings	Full-time adult ordinary time earnings	Full-time adult total earnings	All females total earnings	Full-time adult ordinary time earnings	Full-time adult total earnings	All employees total earnings
DOLLARS									
1998									
May	848.30	898.00	840.30	745.50	758.20	621.20	804.00	837.60	726.60
August	861.90	911.00	850.80	756.40	768.90	631.90	816.40	849.60	737.60
November	873.60	922.20	859.40	767.10	779.60	638.30	827.50	860.60	745.00
1999									
February	881.40	930.10	865.30	776.30	789.20	640.80	835.80	869.10	748.00
May	886.70	936.10	869.70	783.90	797.10	643.10	841.90	875.30	749.90
August	891.50	941.70	873.50	791.30	804.70	647.20	847.50	881.00	752.00
PERCENTAGE CHANGE (from previous quarter)									
1998									
May	1.3	1.3	1.2	1.2	1.2	1.7	1.3	1.3	1.5
August	1.6	1.4	1.2	1.5	1.4	1.7	1.5	1.4	1.5
November	1.4	1.2	1.0	1.4	1.4	1.0	1.4	1.3	1.0
1999									
February	0.9	0.9	0.7	1.2	1.2	0.4	1.0	1.0	0.4
May	0.6	0.6	0.5	1.0	1.0	0.4	0.7	0.7	0.2
August	0.5	0.6	0.4	0.9	1.0	0.6	0.7	0.6	0.3
PERCENTAGE CHANGE (from corresponding quarter of previous year)									
1997									
August	5.8	5.6	5.3	6.3	6.2	6.1	5.9	5.7	5.4
1998									
August	5.1	5.1	4.9	4.8	4.8	5.7	5.0	5.0	5.3
1999									
August	3.4	3.4	2.7	4.6	4.7	2.4	3.8	3.7	1.9

AVERAGE WEEKLY EARNINGS, Public Sector—Australia: **Seasonally Adjusted**

Reference period	MALES.....			FEMALES.....			PERSONS.....		
	Full-time adult ordinary time earnings	Full-time adult total earnings	All males total earnings	Full-time adult ordinary time earnings	Full-time adult total earnings	All females total earnings	Full-time adult ordinary time earnings	Full-time adult total earnings	All employees total earnings
DOLLARS									
1998									
May	845.60	896.30	840.10	742.90	755.10	616.60	801.60	835.60	724.40
August	861.10	910.60	849.90	757.30	769.80	634.70	816.50	849.60	738.30
November	876.50	924.00	861.00	765.90	778.00	641.10	828.10	860.60	748.00
1999									
February	882.60	931.30	865.60	780.10	793.90	639.60	838.50	872.10	747.00
May	883.70	934.00	869.20	780.60	793.10	639.50	838.90	872.60	748.10
August	893.30	942.80	873.60	792.30	805.90	651.20	848.60	881.70	753.90
PERCENTAGE CHANGE (from previous quarter)									
1998									
May	0.7	0.9	1.1	0.4	0.2	0.7	0.6	0.7	1.1
August	1.8	1.6	1.2	1.9	1.9	2.9	1.9	1.7	1.9
November	1.8	1.5	1.3	1.1	1.1	1.0	1.4	1.3	1.3
1999									
February	0.7	0.8	0.5	1.9	2.1	-0.2	1.3	1.3	-0.1
May	0.1	0.3	0.4	0.1	-0.1	0.0	0.0	0.1	0.1
August	1.1	0.9	0.5	1.5	1.6	1.8	1.2	1.0	0.8
PERCENTAGE CHANGE (from corresponding quarter of previous year)									
1997									
August	6.1	5.9	5.6	6.5	6.5	6.2	6.1	5.9	5.6
1998									
August	4.7	4.8	4.4	4.7	4.7	6.3	4.7	4.8	5.3
1999									
August	3.7	3.5	2.8	4.6	4.7	2.6	3.9	3.8	2.1

AVERAGE WEEKLY EARNINGS, Public Sector—Australia: **Original**

Reference period	MALES.....			FEMALES.....			PERSONS.....		
	Full-time adult ordinary time earnings	Full-time adult total earnings	All males total earnings	Full-time adult ordinary time earnings	Full-time adult total earnings	All females total earnings	Full-time adult ordinary time earnings	Full-time adult total earnings	All employees total earnings
DOLLARS									
1998									
May	847.20	899.80	840.80	744.50	757.60	618.50	802.70	838.20	725.00
August	859.30	906.50	845.80	753.40	766.20	627.10	813.50	845.90	732.20
November	877.30	925.60	857.80	767.40	779.10	637.10	830.00	862.60	744.20
1999									
February	882.10	930.20	872.30	781.00	793.80	649.30	838.40	871.30	756.30
May	885.20	937.50	869.70	782.10	795.60	641.30	840.00	875.20	748.60
August	891.50	938.60	869.50	788.40	802.20	643.30	845.60	877.90	747.80
PERCENTAGE CHANGE (from previous quarter)									
1998									
May	0.9	1.4	0.4	0.5	0.6	-0.5	0.7	1.1	-0.1
August	1.4	0.7	0.6	1.2	1.1	1.4	1.3	0.9	1.0
November	2.1	2.1	1.4	1.9	1.7	1.6	2.0	2.0	1.6
1999									
February	0.5	0.5	1.7	1.8	1.9	1.9	1.0	1.0	1.6
May	0.3	0.8	-0.3	0.1	0.2	-1.2	0.2	0.5	-1.0
August	0.7	0.1	0.0	0.8	0.8	0.3	0.7	0.3	-0.1
PERCENTAGE CHANGE (from corresponding quarter of previous year)									
1997									
August	6.1	5.9	5.6	6.5	6.5	6.2	6.1	5.9	5.6
1998									
August	4.7	4.9	4.5	4.7	4.7	6.3	4.7	4.8	5.4
1999									
August	3.8	3.5	2.8	4.6	4.7	2.6	3.9	3.8	2.1

AVERAGE WEEKLY EARNINGS, Industry—Australia: **Original**

Industry	MALES.....			FEMALES.....			PERSONS.....		
	<i>Full-time adult ordinary time earnings</i>	<i>Full-time adult total earnings</i>	<i>All males total earnings</i>	<i>Full-time adult ordinary time earnings</i>	<i>Full-time adult total earnings</i>	<i>All females total earnings</i>	<i>Full-time adult ordinary time earnings</i>	<i>Full-time adult total earnings</i>	<i>All employees total earnings</i>
DOLLARS									
Mining	1 198.4	1 296.90	1 272.00	882.20	905.50	844.10	1 168.80	1 260.30	1 227.70
Manufacturing	732.60	815.80	771.10	631.30	662.20	559.10	710.80	782.70	716.00
Electricity, gas and water supply	895.50	986.00	974.80	786.80	809.20	718.80	880.50	961.70	932.00
Construction	750.50	819.90	774.40	556.30	564.70	461.50	725.70	787.40	721.70
Wholesale trade	757.90	786.00	730.50	645.90	660.50	515.30	730.60	755.40	662.40
Retail trade	608.90	642.70	464.80	524.60	540.20	302.70	576.70	603.60	377.30
Accommodation, cafes and restaurants	601.10	618.90	423.10	539.70	546.80	291.10	578.30	592.10	347.00
Transport and storage	813.60	892.20	811.10	668.70	695.20	578.00	777.40	843.00	745.50
Communication services	838.10	920.80	878.10	745.90	775.20	674.20	809.00	874.90	803.40
Finance and insurance	1 173.20	1 183.60	1 131.70	709.00	725.10	584.50	926.20	939.70	789.10
Property and business services	854.70	906.20	765.70	635.50	648.30	496.10	765.60	801.40	638.10
Government administration and defence	858.60	884.80	844.50	762.40	774.20	641.20	821.20	841.80	750.80
Education	936.00	942.20	771.60	823.30	825.50	586.60	868.10	871.90	645.70
Health and community services	894.30	931.50	750.90	719.00	733.40	517.70	773.80	795.40	568.10
Cultural and recreational services	767.80	788.50	494.90	666.50	680.20	420.00	719.70	737.20	454.90
Personal and other services	795.50	833.40	726.60	632.20	645.30	416.60	736.00	764.90	552.70
All industries	796.20	847.30	727.10	675.70	690.30	479.30	751.80	789.50	605.40
PERCENTAGE CHANGE (from corresponding quarter of previous year)									
Mining	-2.7	-2.6	-2.7	-0.5	0.0	-0.5	-2.2	-2.0	-2.1
Manufacturing	2.7	2.9	2.4	9.4	9.0	7.4	3.9	3.9	3.3
Electricity, gas and water supply	1.1	1.2	2.0	3.3	2.5	1.0	1.3	1.2	1.6
Construction	-1.3	-7.0	-7.8	-2.4	-3.8	-6.2	-1.6	-7.0	-7.9
Wholesale trade	0.2	0.6	1.0	3.7	4.6	2.5	1.3	1.8	1.7
Retail trade	5.0	6.5	6.0	4.1	5.0	2.5	4.6	5.8	3.9
Accommodation, cafes and restaurants	4.1	4.5	0.2	4.2	4.1	-2.1	4.4	4.6	-1.5
Transport and storage	1.5	-0.7	0.5	0.1	0.8	-4.3	1.4	-0.1	-0.7
Communication services	-2.5	-3.1	-4.0	0.2	0.5	1.7	-2.2	-2.8	-3.3
Finance and insurance	3.8	3.6	2.5	2.7	2.8	-2.3	3.0	2.9	-1.5
Property and business services	-2.0	-1.2	3.6	-1.1	-0.7	0.5	-0.7	0.0	3.3
Government administration and defence	6.2	5.9	5.3	5.6	5.6	3.7	5.8	5.6	4.1
Education	5.4	5.2	6.4	5.8	5.8	0.8	5.4	5.3	2.1
Health and community services	2.6	2.4	7.1	5.7	5.8	4.5	5.1	5.1	5.5
Cultural and recreational services	1.3	2.0	-5.8	-1.7	-1.5	17.5	-0.5	0.0	5.0
Personal and other services	-0.5	-0.5	0.9	0.1	-0.5	0.2	-0.4	-0.6	-0.6
All industries	1.5	0.9	0.7	3.5	3.6	1.2	2.1	1.7	0.4

AVERAGE WEEKLY EARNINGS, States and Territories: **Trend**

Reference period	MALES.....			FEMALES.....			PERSONS.....		
	Full-time adult ordinary time earnings	Full-time adult total earnings	All males total earnings	Full-time adult ordinary time earnings	Full-time adult total earnings	All females total earnings	Full-time adult ordinary time earnings	Full-time adult total earnings	All employees total earnings
NEW SOUTH WALES									
1998									
May	799.60	858.40	735.70	669.70	684.30	487.60	750.30	792.30	613.90
August	808.10	867.80	742.40	679.20	693.70	491.80	759.70	802.50	620.00
November	819.80	879.30	752.00	690.70	705.20	500.20	772.00	814.70	629.50
1999									
February	830.50	889.60	760.90	699.90	714.40	505.70	782.00	824.60	636.10
May	838.20	897.70	768.10	705.40	719.90	506.80	788.50	831.30	639.20
August	843.80	903.90	773.50	708.40	722.80	504.50	792.50	835.60	639.70
VICTORIA									
1998									
May	768.00	826.30	711.30	644.20	658.80	474.20	723.60	766.70	603.40
August	774.10	831.40	709.40	651.40	665.20	475.60	730.20	771.70	602.30
November	775.90	832.30	709.40	655.10	669.20	474.50	732.10	773.50	600.30
1999									
February	775.80	831.40	711.70	660.00	674.80	476.20	733.60	774.60	600.80
May	776.20	829.30	714.30	669.20	684.40	482.50	737.40	776.50	604.30
August	777.30	826.40	717.30	682.00	697.20	491.50	743.10	778.90	609.70
QUEENSLAND									
1998									
May	737.70	792.20	702.10	616.10	628.90	461.80	692.40	731.40	587.30
August	740.20	794.40	701.50	618.90	631.80	462.50	695.50	734.50	587.60
November	741.60	793.90	700.70	622.00	634.70	464.50	697.40	735.00	588.00
1999									
February	743.80	793.50	701.60	625.80	637.10	464.70	699.80	735.20	587.90
May	746.10	794.60	703.80	629.20	639.20	464.80	702.60	736.80	588.30
August	748.10	797.30	705.40	632.00	641.00	465.60	705.10	739.40	588.70
SOUTH AUSTRALIA									
1998									
May	720.20	768.70	653.80	623.20	638.00	454.20	684.90	720.80	556.70
August	734.30	788.10	668.30	627.90	643.90	463.80	694.90	734.60	570.10
November	742.10	799.50	678.50	628.80	646.60	468.70	699.40	742.20	577.90
1999									
February	742.90	800.20	679.70	629.00	649.60	465.20	700.40	744.20	576.10
May	741.10	796.40	676.60	628.70	652.20	458.00	700.20	743.50	570.00
August	739.60	792.70	673.60	629.50	656.10	450.70	700.80	743.40	563.80

AVERAGE WEEKLY EARNINGS, States and Territories: **Trend** *continued*

Reference period	MALES.....			FEMALES.....			PERSONS.....		
	Full-time adult ordinary time earnings	Full-time adult total earnings	All males total earnings	Full-time adult ordinary time earnings	Full-time adult total earnings	All females total earnings	Full-time adult ordinary time earnings	Full-time adult total earnings	All employees total earnings
WESTERN AUSTRALIA									
1998									
May	803.30	866.30	742.30	617.00	629.70	409.30	736.20	781.20	572.40
August	809.80	872.80	740.80	625.60	638.30	411.00	744.40	789.60	573.00
November	808.40	869.30	733.70	633.30	645.50	414.70	746.70	790.40	571.90
1999									
February	807.70	866.40	728.40	638.40	650.60	417.90	747.90	790.10	571.60
May	814.50	871.40	728.70	640.70	653.20	420.70	752.80	794.00	574.00
August	826.10	881.50	732.00	640.90	653.80	423.20	760.00	800.40	577.90
TASMANIA									
1998									
May	733.80	774.90	663.60	608.10	620.50	405.60	691.30	722.70	534.10
August	735.00	780.30	668.40	615.70	628.90	410.90	695.20	729.60	538.90
November	736.60	784.50	673.00	617.80	631.20	414.80	697.00	733.40	543.30
1999									
February	739.30	785.60	673.50	617.10	630.10	417.70	698.00	733.30	545.20
May	742.80	783.70	670.90	618.00	630.10	421.10	700.20	731.40	545.30
August	747.80	780.70	667.60	620.90	632.40	424.70	704.40	729.50	544.20
NORTHERN TERRITORY									
1998									
May	794.20	847.10	700.40	674.20	689.80	543.50	742.30	778.90	622.80
August	797.60	848.60	691.80	682.00	696.90	545.40	747.60	782.70	619.20
November	795.10	844.90	676.20	687.00	701.20	543.30	748.30	782.80	611.70
1999									
February	797.00	847.60	670.40	691.40	705.60	537.20	751.60	786.90	607.60
May	802.80	854.80	673.10	696.60	711.20	530.20	757.90	793.80	606.50
August	810.70	865.60	681.50	703.60	718.70	524.80	766.20	803.50	607.90
AUSTRALIAN CAPITAL TERRITORY									
1998									
May	908.90	940.10	830.90	768.50	777.80	608.80	849.90	872.80	722.80
August	909.90	943.30	833.90	773.70	784.10	613.00	853.50	877.50	727.30
November	899.00	935.40	821.30	775.20	787.10	606.60	848.70	874.20	717.60
1999									
February	889.30	926.50	804.40	775.90	787.70	588.40	843.00	869.50	698.10
May	887.20	922.80	792.50	779.10	789.70	567.20	842.10	868.60	678.60
August	890.50	923.90	785.80	785.00	793.80	548.30	845.60	871.40	662.20

AVERAGE WEEKLY EARNINGS, States and Territories: **Seasonally Adjusted**

Reference period	MALES.....			FEMALES.....			PERSONS.....		
	Full-time adult ordinary time earnings	Full-time adult total earnings	All males total earnings	Full-time adult ordinary time earnings	Full-time adult total earnings	All females total earnings	Full-time adult ordinary time earnings	Full-time adult total earnings	All employees total earnings
NEW SOUTH WALES									
1998									
May	797.50	857.40	736.10	668.80	683.80	486.80	748.80	791.20	613.50
August	809.40	868.80	742.80	679.00	693.10	492.00	759.90	802.60	620.10
November	818.20	879.10	749.50	689.30	704.40	497.70	771.10	814.40	627.90
1999									
February	831.00	887.60	763.20	702.90	716.30	509.00	783.60	825.00	638.50
May	842.90	903.60	770.00	707.20	722.80	510.80	791.80	835.20	641.90
August	838.70	899.00	770.40	704.50	718.50	498.30	788.00	831.30	635.30
VICTORIA									
1998									
May	765.80	825.80	705.70	644.00	658.10	471.70	722.80	766.80	599.40
August	775.40	829.30	712.40	653.80	667.10	480.20	732.30	770.60	607.60
November	780.80	838.50	711.10	656.00	670.10	476.80	735.10	778.30	601.00
1999									
February	767.50	823.60	704.20	658.40	674.50	466.00	727.70	769.00	591.90
May	781.30	835.60	722.10	663.70	677.20	487.90	738.80	778.40	611.30
August	776.70	824.10	713.80	689.00	705.50	492.80	745.10	780.00	608.40
QUEENSLAND									
1998									
May	737.00	787.30	702.30	616.90	629.50	457.80	693.10	729.60	586.50
August	745.50	806.40	712.00	615.40	627.80	461.30	697.50	740.60	591.30
November	734.70	784.90	687.80	624.00	638.70	471.30	693.80	730.70	586.40
1999									
February	744.50	791.20	700.80	626.70	636.20	459.30	700.50	733.40	583.70
May	751.50	802.20	715.90	626.90	637.20	465.20	704.90	740.50	594.80
August	742.70	791.50	694.40	633.90	643.40	467.90	702.60	736.90	584.70
SOUTH AUSTRALIA									
1998									
May	714.60	760.80	643.70	618.80	632.60	449.70	680.10	714.00	550.40
August	735.50	788.30	672.50	626.30	641.70	463.50	695.50	733.90	572.00
November	750.40	813.20	688.30	632.40	650.90	474.00	704.70	751.90	586.50
1999									
February	736.00	790.40	669.00	629.60	649.90	465.40	696.40	738.30	569.10
May	743.00	798.20	683.40	623.40	646.40	454.30	699.80	742.50	573.40
August	740.70	794.90	671.50	634.10	661.50	452.80	702.90	746.80	562.80

Reference period	MALES.....			FEMALES.....			PERSONS.....		
	Full-time adult ordinary time earnings	Full-time adult total earnings	All males total earnings	Full-time adult ordinary time earnings	Full-time adult total earnings	All females total earnings	Full-time adult ordinary time earnings	Full-time adult total earnings	All employees total earnings
WESTERN AUSTRALIA									
1998									
May	802.60	868.10	744.10	618.10	632.00	407.90	736.20	783.70	573.20
August	814.80	877.00	745.00	627.10	638.80	413.60	748.80	793.20	577.40
November	817.20	875.30	732.10	629.30	641.90	411.20	750.00	792.00	567.90
1999									
February	787.30	851.00	722.40	642.00	654.20	422.30	736.80	781.90	571.20
May	823.60	875.90	731.20	642.70	654.70	417.80	759.30	797.70	574.30
August	829.00	886.30	733.60	636.70	650.20	424.10	760.00	801.60	578.40
TASMANIA									
1998									
May	730.70	777.10	665.00	606.80	617.80	404.50	688.50	723.10	535.80
August	735.50	776.40	664.90	618.90	632.40	419.40	697.50	728.50	541.20
November	735.30	780.40	669.20	619.10	633.40	407.40	696.40	731.20	536.30
1999									
February	744.30	800.90	689.30	615.00	627.00	418.20	700.60	742.80	553.80
May	735.00	769.50	655.50	615.50	628.10	425.40	693.90	721.10	541.90
August	752.80	785.80	673.40	624.50	635.90	421.00	709.20	734.10	542.60
NORTHERN TERRITORY									
1998									
May	797.20	843.30	701.10	671.90	687.70	542.50	743.50	776.10	625.10
August	790.40	845.70	684.20	680.80	696.00	523.20	743.40	780.40	608.60
November	803.50	850.60	685.40	688.30	701.40	546.30	753.10	786.00	621.30
1999									
February	791.20	843.50	664.40	696.00	711.40	542.40	749.80	787.00	606.60
May	798.70	848.20	662.40	685.90	699.50	519.60	751.60	785.60	595.70
August	818.70	875.30	696.80	711.90	727.40	531.00	773.90	812.20	619.10
AUSTRALIAN CAPITAL TERRITORY									
1998									
May	908.10	935.90	831.50	765.10	773.70	600.70	847.10	868.60	718.00
August	918.50	954.40	839.00	779.10	788.80	616.50	860.00	886.40	732.30
November	897.30	932.20	822.20	773.80	787.20	614.90	848.90	871.00	722.30
1999									
February	879.60	918.50	799.70	774.40	786.40	582.50	837.10	866.10	693.50
May	890.20	926.60	788.60	777.10	787.40	566.20	841.10	868.50	675.10
August	893.60	924.90	791.70	788.00	796.80	550.20	850.10	873.70	667.10

AVERAGE WEEKLY EARNINGS, States and Territories: **Original**

Reference period	MALES.....			FEMALES.....			PERSONS.....		
	Full-time adult ordinary time earnings	Full-time adult total earnings	All males total earnings	Full-time adult ordinary time earnings	Full-time adult total earnings	All females total earnings	Full-time adult ordinary time earnings	Full-time adult total earnings	All employees total earnings
NEW SOUTH WALES									
1998									
May	794.30	854.50	734.30	667.90	681.80	488.00	746.20	788.80	613.00
August	810.90	867.50	744.00	679.00	693.90	492.70	761.50	802.50	620.60
November	818.30	882.90	750.30	688.90	703.90	496.20	770.10	816.20	626.50
1999									
February	832.60	888.00	762.90	704.30	718.10	508.60	785.50	825.60	640.10
May	839.30	900.40	768.20	706.10	720.60	512.00	789.00	832.50	641.40
August	840.50	898.00	771.50	704.50	719.40	499.00	789.90	831.40	635.70
VICTORIA									
1998									
May	767.60	825.30	701.50	646.30	660.40	470.40	724.80	767.00	596.30
August	770.90	826.30	704.30	650.20	662.70	475.60	728.00	768.20	600.90
November	781.80	842.10	716.80	657.40	673.30	473.90	736.30	780.30	602.40
1999									
February	769.20	823.70	710.90	658.10	673.20	474.40	729.00	769.20	600.30
May	783.00	835.00	717.60	666.20	679.80	486.50	740.60	778.60	608.00
August	772.30	821.00	705.70	685.20	700.80	488.40	740.80	777.60	601.60
QUEENSLAND									
1998									
May	738.60	789.90	703.10	616.10	628.70	458.50	693.50	730.50	586.30
August	742.90	800.90	711.30	613.50	627.00	461.50	695.60	737.40	593.30
November	733.70	788.20	688.20	628.00	641.90	469.00	694.30	733.70	583.50
1999									
February	746.30	790.50	700.30	625.50	634.80	460.90	701.40	732.70	584.80
May	753.00	804.80	716.60	626.20	636.70	465.80	705.20	741.50	594.40
August	740.30	786.20	693.90	631.70	642.20	468.00	700.70	733.70	587.00
SOUTH AUSTRALIA									
1998									
May	713.80	759.50	646.30	620.10	634.30	452.40	680.10	714.40	552.80
August	737.50	785.60	670.40	623.50	636.30	462.10	694.70	729.60	569.60
November	745.20	811.60	679.00	631.50	652.90	471.50	702.50	752.00	580.30
1999									
February	739.90	796.20	677.40	632.00	651.90	466.50	699.60	742.30	574.90
May	742.20	796.80	686.30	624.70	648.00	457.30	699.70	742.90	576.10
August	742.70	792.00	669.30	631.20	655.70	451.20	702.00	742.20	560.40

Reference period	MALES.....			FEMALES.....			PERSONS.....		
	Full-time adult ordinary time earnings	Full-time adult total earnings	All males total earnings	Full-time adult ordinary time earnings	Full-time adult total earnings	All females total earnings	Full-time adult ordinary time earnings	Full-time adult total earnings	All employees total earnings
WESTERN AUSTRALIA									
1998									
May	798.30	866.00	741.30	616.50	631.00	406.10	734.90	784.10	572.00
August	818.10	877.60	746.40	627.70	638.50	412.30	750.10	792.20	574.80
November	816.10	875.40	730.80	625.40	638.60	409.00	747.80	790.50	566.40
1999									
February	789.30	852.20	724.70	647.10	658.90	427.70	738.90	783.70	576.20
May	819.10	873.80	728.70	640.80	653.50	415.90	757.80	798.10	573.20
August	832.60	887.00	735.00	637.50	650.10	422.80	761.60	800.80	576.00
TASMANIA									
1998									
May	727.60	778.60	667.20	605.20	615.20	400.40	686.60	723.90	533.60
August	732.50	769.30	652.20	613.40	626.20	418.90	692.00	720.60	536.10
November	738.50	783.70	672.90	621.30	637.00	407.70	699.30	734.70	537.00
1999									
February	747.40	803.10	696.30	619.90	632.20	422.50	705.10	746.40	560.50
May	731.90	771.20	657.80	613.70	625.30	421.00	692.00	722.00	539.60
August	749.70	778.50	660.50	619.10	629.90	420.70	703.60	726.10	537.60
NORTHERN TERRITORY									
1998									
May	796.50	846.60	704.40	668.60	685.20	538.50	741.30	776.90	625.20
August	788.40	845.10	681.10	680.60	696.90	526.30	742.00	781.30	607.20
November	802.30	852.30	684.80	690.00	701.60	544.80	753.20	786.50	619.50
1999									
February	795.10	839.00	664.70	698.10	713.10	545.00	753.40	784.80	609.70
May	797.90	851.70	665.90	682.40	696.80	515.50	749.30	786.50	595.80
August	816.60	874.60	693.40	711.60	728.20	534.10	772.40	813.00	617.50
AUSTRALIAN CAPITAL TERRITORY									
1998									
May	904.50	933.70	825.70	764.70	776.20	598.70	847.50	869.50	715.60
August	924.20	956.30	839.60	774.60	785.60	613.20	861.40	884.60	729.00
November	891.30	930.10	819.40	774.70	785.40	612.70	843.40	870.60	720.50
1999									
February	883.30	921.00	807.50	778.50	789.00	589.90	840.90	867.50	700.60
May	886.50	924.10	782.80	776.30	789.50	563.90	841.40	869.10	672.80
August	899.40	927.00	792.50	783.70	793.80	547.40	851.70	872.10	664.20

AVERAGE WEEKLY EARNINGS, Quarterly Percentage Change—States and Territories: **Trend**

Reference period	MALES.....			FEMALES.....			PERSONS.....		
	Full-time adult ordinary time earnings	Full-time adult total earnings	All males total earnings	Full-time adult ordinary time earnings	Full-time adult total earnings	All females total earnings	Full-time adult ordinary time earnings	Full-time adult total earnings	All employees total earnings
NEW SOUTH WALES									
1999									
February	1.3	1.2	1.2	1.3	1.3	1.1	1.3	1.2	1.0
May	0.9	0.9	0.9	0.8	0.8	0.2	0.8	0.8	0.5
August	0.7	0.7	0.7	0.4	0.4	-0.4	0.5	0.5	0.1
VICTORIA									
1999									
February	0.0	-0.1	0.3	0.7	0.8	0.4	0.2	0.1	0.1
May	0.1	-0.3	0.4	1.4	1.4	1.3	0.5	0.2	0.6
August	0.1	-0.4	0.4	1.9	1.9	1.9	0.8	0.3	0.9
QUEENSLAND									
1999									
February	0.3	-0.1	0.1	0.6	0.4	0.1	0.3	0.0	0.0
May	0.3	0.1	0.3	0.5	0.3	0.0	0.4	0.2	0.1
August	0.3	0.3	0.2	0.5	0.3	0.2	0.4	0.4	0.1
SOUTH AUSTRALIA									
1999									
February	0.1	0.1	0.2	0.0	0.5	-0.7	0.2	0.3	-0.3
May	-0.2	-0.5	-0.5	-0.1	0.4	-1.6	0.0	-0.1	-1.1
August	-0.2	-0.5	-0.5	0.1	0.6	-1.6	0.1	0.0	-1.1
WESTERN AUSTRALIA									
1999									
February	-0.1	-0.3	-0.7	0.8	0.8	0.8	0.2	0.0	-0.1
May	0.8	0.6	0.0	0.4	0.4	0.7	0.7	0.5	0.4
August	1.4	1.2	0.5	0.0	0.1	0.6	1.0	0.8	0.7
TASMANIA									
1999									
February	0.4	0.1	0.1	-0.1	-0.2	0.7	0.1	0.0	0.3
May	0.5	-0.2	-0.4	0.1	0.0	0.8	0.3	-0.3	0.0
August	0.7	-0.4	-0.5	0.5	0.4	0.8	0.6	-0.3	-0.2
NORTHERN TERRITORY									
1999									
February	0.2	0.3	-0.9	0.6	0.6	-1.1	0.4	0.5	-0.7
May	0.7	0.8	0.4	0.8	0.8	-1.3	0.8	0.9	-0.2
August	1.0	1.3	1.2	1.0	1.1	-1.0	1.1	1.2	0.2
AUSTRALIAN CAPITAL TERRITORY									
1999									
February	-1.1	-1.0	-2.1	0.1	0.1	-3.0	-0.7	-0.5	-2.7
May	-0.2	-0.4	-1.5	0.4	0.2	-3.6	-0.1	-0.1	-2.8
August	0.4	0.1	-0.8	0.8	0.5	-3.3	0.4	0.3	-2.4

Reference period	MALES.....			FEMALES.....			PERSONS.....		
	Full-time adult ordinary time earnings	Full-time adult total earnings	All males total earnings	Full-time adult ordinary time earnings	Full-time adult total earnings	All females total earnings	Full-time adult ordinary time earnings	Full-time adult total earnings	All employees total earnings
NEW SOUTH WALES									
1999									
February	1.6	1.0	1.8	2.0	1.7	2.3	1.6	1.3	1.7
May	1.4	1.8	0.9	0.6	0.9	0.4	1.1	1.2	0.5
August	-0.5	-0.5	0.1	-0.4	-0.6	-2.4	-0.5	-0.5	-1.0
VICTORIA									
1999									
February	-1.7	-1.8	-1.0	0.4	0.7	-2.2	-1.0	-1.2	-1.5
May	1.8	1.5	2.5	0.8	0.4	4.7	1.5	1.2	3.3
August	-0.6	-1.4	-1.1	3.8	4.2	1.0	0.9	0.2	-0.5
QUEENSLAND									
1999									
February	1.3	0.8	1.9	0.4	-0.4	-2.5	1.0	0.4	-0.5
May	0.9	1.4	2.2	0.0	0.2	1.3	0.6	1.0	1.9
August	-1.2	-1.3	-3.0	1.1	1.0	0.6	-0.3	-0.5	-1.7
SOUTH AUSTRALIA									
1999									
February	-1.9	-2.8	-2.8	-0.4	-0.1	-1.8	-1.2	-1.8	-3.0
May	1.0	1.0	2.2	-1.0	-0.5	-2.4	0.5	0.6	0.7
August	-0.3	-0.4	-1.8	1.7	2.3	-0.3	0.4	0.6	-1.8
WESTERN AUSTRALIA									
1999									
February	-3.7	-2.8	-1.3	2.0	1.9	2.7	-1.8	-1.3	0.6
May	4.6	2.9	1.2	0.1	0.1	-1.1	3.1	2.0	0.5
August	0.7	1.2	0.3	-0.9	-0.7	1.5	0.1	0.5	0.7
TASMANIA									
1999									
February	1.2	2.6	3.0	-0.7	-1.0	2.7	0.6	1.6	3.3
May	-1.2	-3.9	-4.9	0.1	0.2	1.7	-0.9	-2.9	-2.1
August	2.4	2.1	2.7	1.5	1.2	-1.0	2.2	1.8	0.1
NORTHERN TERRITORY									
1999									
February	-1.5	-0.8	-3.1	1.1	1.4	-0.7	-0.4	0.1	-2.4
May	0.9	0.5	-0.3	-1.5	-1.7	-4.2	0.2	-0.2	-1.8
August	2.5	3.2	5.2	3.8	4.0	2.2	3.0	3.4	3.9
AUSTRALIAN CAPITAL TERRITORY									
1999									
February	-2.0	-1.5	-2.7	0.1	-0.1	-5.3	-1.4	-0.6	-4.0
May	1.2	0.9	-1.4	0.3	0.1	-2.8	0.5	0.3	-2.6
August	0.4	-0.2	0.4	1.4	1.2	-2.8	1.1	0.6	-1.2

AVERAGE WEEKLY EARNINGS, Quarterly Percentage Change—States and Territories: **Original**

Reference period	MALES.....			FEMALES.....			PERSONS.....		
	Full-time adult ordinary time earnings	Full-time adult total earnings	All males total earnings	Full-time adult ordinary time earnings	Full-time adult total earnings	All females total earnings	Full-time adult ordinary time earnings	Full-time adult total earnings	All employees total earnings
NEW SOUTH WALES									
1999									
February	1.7	0.6	1.7	2.2	2.0	2.5	2.0	1.2	2.2
May	0.8	1.4	0.7	0.3	0.4	0.7	0.4	0.8	0.2
August	0.2	-0.3	0.4	-0.2	-0.2	-2.6	0.1	-0.1	-0.9
VICTORIA									
1999									
February	-1.6	-2.2	-0.8	0.1	0.0	0.1	-1.0	-1.4	-0.4
May	1.8	1.4	0.9	1.2	1.0	2.5	1.6	1.2	1.3
August	-1.4	-1.7	-1.7	2.8	3.1	0.4	0.0	-0.1	-1.0
QUEENSLAND									
1999									
February	1.7	0.3	1.8	-0.4	-1.1	-1.7	1.0	-0.1	0.2
May	0.9	1.8	2.3	0.1	0.3	1.0	0.5	1.2	1.7
August	-1.7	-2.3	-3.2	0.9	0.9	0.5	-0.6	-1.0	-1.3
SOUTH AUSTRALIA									
1999									
February	-0.7	-1.9	-0.2	0.1	-0.1	-1.1	-0.4	-1.3	-0.9
May	0.3	0.1	1.3	-1.2	-0.6	-2.0	0.0	0.1	0.2
August	0.1	-0.6	-2.5	1.0	1.2	-1.3	0.3	-0.1	-2.7
WESTERN AUSTRALIA									
1999									
February	-3.3	-2.6	-0.8	3.5	3.2	4.6	-1.2	-0.9	1.7
May	3.8	2.5	0.5	-1.0	-0.8	-2.7	2.6	1.8	-0.5
August	1.6	1.5	0.9	-0.5	-0.5	1.7	0.5	0.3	0.5
TASMANIA									
1999									
February	1.2	2.5	3.5	-0.2	-0.8	3.6	0.8	1.6	4.4
May	-2.1	-4.0	-5.5	-1.0	-1.1	-0.4	-1.9	-3.3	-3.7
August	2.4	0.9	0.4	0.9	0.7	-0.1	1.7	0.6	-0.4
NORTHERN TERRITORY									
1999									
February	-0.9	-1.6	-2.9	1.2	1.6	0.0	0.0	-0.2	-1.6
May	0.3	1.5	0.2	-2.2	-2.3	-5.4	-0.5	0.2	-2.3
August	2.3	2.7	4.1	4.3	4.5	3.6	3.1	3.4	3.6
AUSTRALIAN CAPITAL TERRITORY									
1999									
February	-0.9	-1.0	-1.4	0.5	0.5	-3.7	-0.3	-0.4	-2.8
May	0.4	0.3	-3.1	-0.3	0.1	-4.4	0.1	0.2	-4.0
August	1.5	0.3	1.2	0.9	0.5	-2.9	1.2	0.3	-1.3

AVERAGE WEEKLY EARNINGS, Annual Percentage Change—States and Territories: **Trend**

Reference period	MALES.....			FEMALES.....			PERSONS.....		
	Full-time adult ordinary time earnings	Full-time adult total earnings	All males total earnings	Full-time adult ordinary time earnings	Full-time adult total earnings	All females total earnings	Full-time adult ordinary time earnings	Full-time adult total earnings	All employees total earnings
NEW SOUTH WALES									
1997 August	2.6	1.8	0.8	3.7	3.0	0.2	2.7	1.9	0.3
1998 August	3.6	3.8	3.5	4.2	4.2	1.8	3.9	4.1	2.6
1999 August	4.4	4.2	4.2	4.3	4.2	2.6	4.3	4.1	3.2
VICTORIA									
1997 August	5.1	4.5	3.5	5.0	5.5	4.9	5.4	4.4	3.5
1998 August	4.3	3.4	1.5	4.1	3.2	2.8	3.6	3.3	2.0
1999 August	0.4	-0.6	1.1	4.7	4.8	3.4	1.8	0.9	1.2
QUEENSLAND									
1997 August	5.6	6.1	8.4	5.1	5.4	9.6	5.3	5.9	9.4
1998 August	4.7	4.2	4.9	3.8	3.4	1.9	4.5	4.0	3.3
1999 August	1.1	0.4	0.6	2.1	1.5	0.7	1.4	0.7	0.2
SOUTH AUSTRALIA									
1997 August	4.3	3.8	2.3	4.1	3.5	4.9	3.8	3.2	2.6
1998 August	5.4	4.8	3.1	6.8	7.3	9.3	5.3	5.0	5.3
1999 August	0.7	0.6	0.8	0.3	1.9	-2.8	0.8	1.2	-1.1
WESTERN AUSTRALIA									
1997 August	3.3	2.9	3.2	2.6	2.4	1.6	2.7	2.3	2.0
1998 August	5.0	5.3	4.1	4.5	4.7	-2.0	5.4	5.7	1.7
1999 August	2.0	1.0	-1.2	2.4	2.4	3.0	2.1	1.4	0.9
TASMANIA									
1997 August	7.2	6.5	3.2	3.4	3.0	2.5	5.9	5.4	3.0
1998 August	1.9	3.1	2.4	4.9	5.4	2.6	2.9	4.0	2.5
1999 August	1.7	0.1	-0.1	0.8	0.6	3.3	1.3	0.0	1.0
NORTHERN TERRITORY									
1997 August	4.7	2.3	0.0	4.9	5.1	7.3	4.5	2.9	2.9
1998 August	4.9	4.1	2.5	6.1	6.0	7.5	5.3	4.7	4.0
1999 August	1.6	2.0	-1.5	3.2	3.1	-3.8	2.5	2.7	-1.8
AUSTRALIAN CAPITAL TERRITORY									
1997 August	0.9	1.7	2.3	4.8	4.9	5.1	2.7	3.1	4.2
1998 August	6.3	6.2	7.1	4.8	5.1	5.7	5.9	6.0	6.9
1999 August	-2.1	-2.1	-5.8	1.5	1.2	-10.6	-0.9	-0.7	-8.9

EXPLANATORY NOTES

INTRODUCTION

1 This publication contains final estimates of average weekly earnings for August 1999 based on information obtained from a sample survey of employers. Preliminary estimates were published in *Average Weekly Earnings, Australia, Preliminary* (Cat. no. 6301.0).

SCOPE

2 All wage and salary earners who received pay for the reference period are represented in the Survey of Average Weekly Earnings (AWE), except:

- members of the Australian permanent defence forces;
- employees of enterprises primarily engaged in agriculture, forestry and fishing;
- employees in private households employing staff;
- employees of overseas embassies, consulates, etc;
- employees based outside Australia; and
- employees on workers' compensation who are not paid through the payroll.

3 Also excluded are the following persons who are not regarded as employees for the purposes of this survey:

- casual employees who did not receive pay during the reference period;
- employees on leave without pay who did not receive pay during the reference period;
- employees on strike, or stood down, who did not receive pay during the reference period;
- directors who are not paid a salary;
- proprietors/partners of unincorporated businesses;
- self-employed persons such as subcontractors, owner/drivers, consultants ; and
- persons paid solely by commission without a retainer.

SURVEY DESIGN

4 A sample of approximately 4,700 employer units is selected from the ABS Business Register to ensure adequate State and industry representation. The sample is updated each quarter to reflect changes in the ABS register of businesses. These changes arise from the emergence of new businesses, takeovers and mergers, changes to industry classification, changes in the number of employees, and businesses which have ceased operations. Such updating of the register can contribute to changes in the estimates of average weekly earnings.

5 The statistical unit for the survey comprises all activities of an employer in a particular State or Territory. Each statistical unit is classified to an industry which reflects the predominant activity of the business in the State or Territory. The statistical units are stratified by State, sector, industry, employment size and an equal probability sample is selected from each stratum.

6 Since February 1992, survey data for a number of Commonwealth government and ACT government departments have been collected electronically. From November 1993, survey data for a number of Northern Territory government departments and agencies have also been collected electronically.

SURVEY DESIGN CHANGES

7 Prior to the August 1996 survey, in the small number of cases where a business had a significant number of employees in more than one industry, a separate statistical unit was created for each industry. The change from this procedures had a minimal effect on the average weekly earnings estimates.

EXPLANATORY NOTES

SURVEY DESIGN CHANGES

continued

8 For some time now the ABS has been using Australian Taxation Office information on Group Employer (GE) registrations to add new businesses to the ABS Business Register. The ABS uses GE information to delete from the Business Register those businesses which have ceased trading, or which are no longer employing staff. The result was that a large number of inactive businesses were deleted from the population for the Survey of Average Weekly Earnings for May 1999. This process is ongoing, but the number of deletions after May 1999 is expected to be small. The impact of these deletions on the estimates for May 1999 was negligible and no adjustments have been made to previous estimates.

9 Improvements to the survey estimation method were introduced from May 1999. Adjustments are made each quarter to account for the time lag between businesses commencing operation and their inclusion on the ABS Business Register.

NOTES ON ESTIMATES

10 Average weekly earnings statistics represent average gross (before tax) earnings of employees and do not relate to average award rates nor to the earnings of the 'average person'. Estimates of average weekly earnings are derived by dividing estimates of weekly total earnings by estimates of number of employees. Changes in the averages may be affected not only by changes in the level of earnings of employees but also by changes in the overall composition of the wage and salary earner segment of the labour force.

11 There are several aspects which can contribute to compositional changes, including variations over time in the proportions of full-time, part-time, casual and junior employees; variations in the occupational distribution within and across industries; variations in the distribution of employment between industries; and variations in the proportion of male and female employees. Such effects may apply differently within different States and Territories, and over time.

ROUNDING

12 Estimates of average weekly earnings are rounded to the nearest 10 cents.

13 Percentage changes are calculated on the actual values and may differ from calculations based on rounded estimates.

COMPARABILITY OF RESULTS

14 It is important to recognise that whilst average employee earnings can be derived from the Survey of Employment and Earnings (SEE) published in *Wage and Salary Earners, Australia* (Cat. no. 6248.0), these average earnings will not be comparable with those produced from the AWE Survey. The SEE collects the sum of employee earnings paid in all pay periods ending in a calendar quarter, including payments to employees which are excluded from the scope of the AWE survey such as retrospective pay, pay in advance, leave loadings and severance, termination and redundancy payments.

15 Whilst the quarterly earnings produced by the SEE are affected by the varying number of pay periods from quarter to quarter, the AWE results are unaffected because of the selection of a specified pay period in the middle of a quarter. The SEE earnings data are also more subject to seasonal variations, particularly in the December and March quarters, due to the incidence of holidays taken in January being paid in advance and the earnings being reported in December quarter figures.

HISTORICAL SERIES

16 The AWE series was introduced in August 1981 when it replaced the average weekly earnings series based principally on information from payroll tax returns. Revised estimates of average weekly earnings for the period August 1981 to November 1983 were included in *Average Weekly Earnings, States and Australia, March Quarter 1984* (Cat. no. 6302.0) published on 12 July 1984. Users who need a measure of the movement in earnings for a period which spans both the payroll tax based and employer survey series should refer to Table 3 in that publication which presents both series linked to a common index base (August 1981 = 100.0).

EXPLANATORY NOTES

SEASONAL ADJUSTMENT

17 Seasonal adjustment is a means of removing the estimated effects of normal seasonal variation from the series so that the effects of other influences on the series can be more clearly recognised. Seasonal adjustment does not aim to remove the irregular or non-seasonal influences which may be present in any particular week. Influences that are volatile or unsystematic can still make it difficult to interpret the movement of the series even after adjustment for seasonal variation. This means that quarter-to-quarter movements of seasonally adjusted estimates may not be reliable indicators of trend behaviour.

18 The series have been seasonally adjusted from September 1983 and these historical series can be made available on request. The seasonal factors are reviewed annually to take account of each additional year's original data. The review takes place in time for the results to be incorporated in each February issue of this publication.

19 Details about the method of seasonal adjustment of these series are available on request.

TREND ESTIMATES

20 The ABS considers that trend estimates provide a more reliable guide to the underlying direction of the data, and are more suitable than either the seasonally adjusted or original estimates for most business decisions and policy advice.

21 The trend estimates in this publication, obtained by dampening out the irregular component from the seasonally adjusted series, are calculated using a centred 7-term Henderson moving average of the seasonally adjusted series. Estimates for the three most recent quarters cannot be calculated using this centred average method; instead an asymmetric average is used. This can lead to revisions in the trend estimates for the last three quarters when data become available for later quarters. Revisions of trend estimates will also occur with revisions to the original data and re-estimation of seasonal adjustment factors.

22 If a series is highly volatile then the trend estimates will be subject to greater revision for the latest few quarters as new data become available. However, it is important to note that this does not make the trend series inferior to the seasonally adjusted or original series. In some cases the effect of the irregular component on overall movements will remain in the seasonally adjusted and the original estimates but not in the trend series.

23 For more information, see *A Guide to Interpreting Time Series – Monitoring 'Trends': an Overview* (Cat. no. 1348.0) or contact the Assistant Director, Time Series Analysis on Canberra 02 6252 6345.

24 Two feature articles which have appeared in the ABS monthly publication *Australian Economic Indicators* (Cat. no. 1350.0) may also be of interest:

- Picking Turning Points in the Economy (April 1991); and
- Smarter Data Use (March 1992)

FURTHER INFORMATION

25 Background information about the average weekly earnings series is provided in *Information Paper: New Statistical Series: Employment, Average Weekly Earnings, Job Vacancies and Overtime* (Cat. no. 6256.0) published 21 June 1984. Copies are available on request.

EXPLANATORY NOTES

RELATED PUBLICATIONS

26 The following publications contain related information and are available from ABS Bookshops:

- *Average Weekly Earnings, Preliminary* (Cat. no. 6301.0)—issued quarterly
- *Average Weekly Earnings, Australia 1941–1990* (Cat. no. 6350.0)
- *Employee Earnings and Hours, Australia* (Cat. no. 6306.0)—issued biennially
- *Wage Cost Index, Australia* (Cat. no. 6345.0)—issued quarterly
- *Job Vacancies, Australia* (Cat. no. 6354.0)—issued quarterly
- *Information Paper: New Statistical Series: Employment, Average Weekly Earnings, Job Vacancies and Overtime* (Cat. no. 6256.0)
- *Occasional Paper No 1986/1: Statistics on Wages, Earnings, Income and Labour Costs – A Guide to Their Concepts, Measurement and Usage*
- *Wage and Salary Earners, Australia* (Cat. no. 6248.0)—issued quarterly
- *Labour Force, Australia* (Cat. no. 6203.0)—issued monthly
- *Labour Force Projections, Australia 1992–2005* (Cat. no. 6260.0)
- *Employee Earnings, Benefits and Trade Union Membership* (Cat. no. 6310.0)—issued annually

27 Current publications produced by the ABS are listed in the *Catalogue of Publications and Products, Australia* (Cat. no. 1101.0). The ABS also issues, on Tuesdays and Fridays, a *Release Advice* (Cat. no. 1105.0) which lists publications to be released in the next few days. The catalogue and release advice are available from any ABS office.

UNPUBLISHED STATISTICS

28 In some cases, the ABS can also make available information which is not published. This information may be made available in one or more of the following forms: hardcopy, data tape, floppy disk and Internet Email. Generally, a charge is made for providing unpublished information. Details of additional data available are shown in Special Data Service on page 32 of this publication.

SYMBOLS AND OTHER USAGES

ABS	Australian Bureau of Statistics
ACT	Australian Capital Territory
ANZSIC	Australian and New Zealand Standard Industrial Classification
AWE	Average Weekly Earnings
AWOTE	Average Weekly Ordinary Time Earnings
SEE	Survey of Employment and Earnings

TECHNICAL NOTES

RELIABILITY OF ESTIMATES

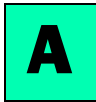
1 As the estimates in this publication are based on information relating to a sample of employers, they are subject to sampling variability. That is, they may differ from the estimates that would have been produced if the information had been obtained from all employers. This difference, called *sampling error*, should not be confused with inaccuracy that may occur because of imperfections in reporting by respondents or in processing by the ABS. Such inaccuracy is referred to as *non-sampling error* and may occur in any enumeration whether it be a full count or a sample. Efforts have been made to reduce non-sampling error by careful design of questionnaires, detailed checking of returns and quality control of processing.

2 The sampling error associated with any estimate can be estimated from the sample results. One measure of sampling error is given by the *standard error* which indicates the degree to which an estimate may vary from the value which would have been obtained from a full enumeration (the 'true value'). There are about two chances in three that a sample estimate differs from the true value by less than one standard error, and about nineteen chances in twenty that the difference will be less than two standard errors.

3 An example of the use of a standard error is as follows. If the estimated average earnings was \$500.00 with a standard error of \$4.00, then there would be about two chances in three that a full enumeration would have given an estimate in the range \$496.00 to \$504.00 and about nineteen chances in twenty that it would be in the range \$492.00 to \$508.00.

4 An example of the use of a standard error for a quarterly change estimate is as follows. If the estimate of quarterly change between two quarters was \$1.50 and the standard error on this estimate was \$1.00, then there would be about two chances in three that a full enumeration would have given a quarterly change estimate in the range +\$0.50 to +\$2.50 and about nineteen chances in twenty that it would be in the range -\$0.50 to +\$3.50.

5 Quarterly movements in estimates of average weekly earnings are considered to be statistically significant where they exceed two standard errors.



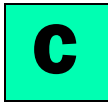
AVERAGE WEEKLY EARNINGS, Standard Errors—States

Reference period	MALES.....			FEMALES.....			PERSONS.....		
	Full-time adult ordinary time earnings	Full-time adult total earnings	All males total earnings	Full-time adult ordinary time earnings	Full-time adult total earnings	All females total earnings	Full-time adult ordinary time earnings	Full-time adult total earnings	All employees total earnings
LEVEL (\$)									
New South Wales	13.70	13.80	14.50	9.00	9.00	12.90	10.00	10.30	12.70
Victoria	15.30	15.70	16.00	10.20	10.40	10.30	11.90	12.10	11.30
Queensland	11.10	12.00	13.10	11.00	11.20	10.40	9.20	9.90	10.90
South Australia	18.50	15.60	18.80	26.30	16.50	13.10	20.30	14.60	14.30
Western Australia	20.60	22.20	23.80	11.00	11.20	13.40	15.40	16.70	18.10
Tasmania	18.00	18.00	17.40	15.30	16.10	13.70	15.80	16.10	15.60
Northern Territory	14.80	14.30	23.10	7.40	7.50	16.70	9.80	9.40	18.60
Australian Capital Territory	22.40	22.90	27.10	12.10	12.10	29.90	15.40	15.30	25.10
Australia	7.00	7.10	7.40	5.10	4.90	5.60	5.40	5.50	5.90
QUARTERLY MOVEMENT (\$)									
New South Wales	10.30	10.30	8.60	6.90	7.20	10.40	7.50	7.80	8.70
Victoria	10.30	12.20	11.60	7.90	8.10	6.20	8.10	9.30	7.90
Queensland	18.60	17.50	16.20	5.80	6.10	6.20	12.40	11.90	10.50
South Australia	15.00	18.50	26.10	9.00	7.50	6.90	12.00	14.00	16.70
Western Australia	9.80	13.80	13.50	8.00	7.90	5.30	8.00	10.50	7.90
Tasmania	10.50	10.40	13.80	9.80	10.20	10.10	9.10	9.30	12.10
Northern Territory	13.20	14.80	16.50	8.50	8.60	9.20	8.90	9.60	10.50
Australian Capital Territory	8.80	9.20	13.80	6.80	7.20	21.60	6.00	6.20	15.00
Australia	5.50	5.80	5.50	3.30	3.50	4.10	4.00	4.20	4.20



AVERAGE WEEKLY EARNINGS, Standard Errors—Sectors

Sector	MALES.....			FEMALES.....			PERSONS.....		
	<i>Full-time adult ordinary time earnings</i>	<i>Full-time adult total earnings</i>	<i>All males total earnings</i>	<i>Full-time adult ordinary time earnings</i>	<i>Full-time adult total earnings</i>	<i>All females total earnings</i>	<i>Full-time adult ordinary time earnings</i>	<i>Full-time adult total earnings</i>	<i>All employees total earnings</i>
LEVEL (\$)									
Private sector	8.50	8.70	8.90	6.60	6.30	6.40	6.80	6.90	7.00
Public sector	5.10	5.10	4.20	2.00	2.10	2.60	3.10	3.10	2.80
All sectors	7.00	7.10	7.40	5.10	4.90	5.60	5.40	5.50	5.90
QUARTERLY MOVEMENT (\$)									
Private sector	6.90	7.30	6.80	4.30	4.50	4.90	5.10	5.50	5.20
Public sector	2.90	3.00	3.00	1.50	1.70	1.60	2.10	2.10	2.00
All sectors	5.50	5.80	5.50	3.30	3.50	4.10	4.00	4.20	4.20



AVERAGE WEEKLY EARNINGS, Standard Errors—Industry

Industry	MALES.....			FEMALES.....			PERSONS.....		
	<i>Full-time adult ordinary time earnings</i>	<i>Full-time adult total earnings</i>	<i>All males total earnings</i>	<i>Full-time adult ordinary time earnings</i>	<i>Full-time adult total earnings</i>	<i>All females total earnings</i>	<i>Full-time adult ordinary time earnings</i>	<i>Full-time adult total earnings</i>	<i>All employees total earnings</i>
LEVEL (\$)									
Mining	30.60	22.00	24.20	23.90	23.20	22.10	29.60	21.60	23.20
Manufacturing	11.00	11.50	12.00	15.20	15.70	15.50	10.00	10.40	11.00
Electricity, gas & water supply	12.00	13.90	12.80	10.20	10.90	14.40	10.70	12.30	10.70
Construction	25.60	29.60	28.40	38.10	39.00	28.40	25.90	29.70	27.20
Wholesale trade	27.30	26.80	27.10	21.50	21.40	19.60	23.30	23.00	23.30
Retail trade	12.20	15.90	17.00	9.80	12.00	11.40	9.90	12.40	13.30
Accommodation, cafes & restaurants	16.20	19.80	23.10	16.10	16.10	11.60	14.10	16.70	16.00
Transport & storage	30.00	31.50	39.30	20.40	22.10	26.90	25.90	27.50	34.90
Communication services	20.40	19.90	19.50	9.20	9.30	7.80	16.30	15.90	14.40
Finance & insurance	51.20	51.30	50.70	12.10	12.00	31.10	29.40	29.40	38.20
Property & business services	34.90	34.80	31.70	21.70	18.40	14.80	26.80	25.80	21.90
Government administration & defence	14.40	13.80	12.30	6.50	6.60	8.40	9.70	9.30	8.70
Education	4.70	4.80	8.50	5.70	5.60	9.40	4.80	4.90	8.60
Health & community services	26.30	26.80	49.30	11.80	11.90	9.60	13.70	13.80	12.80
Cultural and recreational services	30.00	26.90	57.40	22.40	24.90	33.40	23.50	23.00	34.70
Personal & other services	28.10	32.50	29.40	30.60	31.10	21.30	23.00	25.40	36.10
All industries	7.00	7.10	7.40	5.10	4.90	5.60	5.40	5.50	5.90

QUARTERLY MOVEMENT (\$)									
Mining	19.60	20.70	19.90	11.10	11.50	16.90	17.40	18.50	18.00
Manufacturing	12.20	13.50	13.20	14.30	15.70	11.30	10.90	12.10	11.40
Electricity, gas & water supply	8.50	8.40	8.70	10.20	10.10	11.90	8.00	7.90	8.00
Construction	38.80	33.90	34.40	13.00	14.50	20.40	35.30	31.10	28.70
Wholesale trade	12.50	12.60	12.00	14.60	14.30	11.50	10.90	11.00	11.40
Retail trade	9.80	9.70	8.90	6.10	8.40	8.90	6.60	7.20	9.10
Accommodation, cafes & restaurants	9.00	11.10	8.90	9.20	9.40	6.30	7.70	8.70	6.50
Transport & storage	22.50	28.00	30.20	18.50	20.80	17.90	16.40	20.50	24.40
Communication services	5.80	6.40	5.50	2.80	3.10	12.40	3.90	4.30	7.00
Finance & insurance	30.40	30.70	27.60	10.50	11.00	11.50	18.30	18.50	15.80
Property & business services	24.40	27.70	24.00	12.40	11.90	10.10	16.80	18.40	15.80
Government administration & defence	5.10	5.20	5.40	4.60	5.00	5.10	4.20	4.40	4.20
Education	4.20	4.00	7.30	3.50	3.10	3.50	3.00	2.80	3.70
Health & community services	14.40	14.40	11.50	7.80	8.00	5.50	7.80	7.90	6.00
Cultural and recreational services	7.20	9.10	16.50	13.30	15.20	13.00	9.60	11.90	11.60
Personal & other services	20.80	23.50	16.50	10.30	11.00	19.40	13.80	15.80	13.90
All industries	5.50	5.80	5.50	3.30	3.50	4.10	4.00	4.20	4.20

SPECIAL DATA SERVICE

INTRODUCTION

A large range of unpublished data are available from the Survey of Average Weekly Earnings on request. These data can be produced for clients as customised reports. The variables are listed below.

HOW TO PLACE AN ORDER

Firstly, determine the variables (see following) that you require estimates for. A covering letter indicating these requirements and the intended uses of the data requested should be addressed to:

Labour Statistics Centre
Output Group
Australian Bureau of Statistics
GPO Box K881
PERTH WA 6842

CONTACT OFFICER

If you wish to discuss individual requests, especially in regard to reliability of estimates for particular cross-classifications and the charges involved, please telephone Brad Pottinger on Perth 08 9360 5304.

VARIABLES

The following variables are available from this survey.

Note: The more variables included in any one tabulation the more likely it is that confidentiality provisions associated with the data will be invoked and some data suppressed.

Type of estimate	Original Seasonally adjusted Trend
Composition of earnings	Full-time adult ordinary time earnings Full-time adult total earnings All employees total earnings
States and Territories	New South Wales Victoria Queensland South Australia Western Australia Tasmania Northern Territory Australian Capital Territory
Sector	Private sector Public sector
Sex	Males Females Persons
Industry (ANZSIC classification)	ANZSIC Division (1-digit code) —as shown in table 10 ANZSIC Sub-division (2-digit code) ANZSIC Group (3-digit code) ANZSIC Class (4-digit code)

GLOSSARY

Adult employees	Adult employees are those employees 21 years of age or over and those employees who, although under 21 years of age, are paid at the full adult rate for their occupation.
Average Weekly Earnings	Average Weekly Earnings statistics represent average gross (before tax) earnings of employees and do not relate to average award rates nor to the earnings of the 'average person'. Estimates of average weekly earnings are derived by dividing estimates of weekly total earnings by estimates of number of employees.
Employees	Employees refer to all wage and salary earners (as defined in paragraphs 2 and 3 of the Explanatory Notes) who received pay for any part of the reference period.
Full-time employees	Full-time employees are permanent, temporary and casual employees who normally work the agreed or award hours for a full-time employee in their occupation and received pay for any part of the reference period. If agreed or award hours do not apply, employees are regarded as full-time if they ordinarily work 35 hours or more per week.
Reference period	Reference period for the survey refers to the last pay period ending on or before the third Friday of the middle month of the quarter. Where a pay period is fortnightly or monthly, etc., the employer is requested to report only one week's proportion. The reference date for the current survey is 20 August 1999.
Sector	Public sector includes all local government authorities and government departments, agencies and authorities created by, or reporting to the Commonwealth and State Parliaments. All remaining employees are classified as private sector.
Weekly ordinary time earnings	Weekly ordinary time earnings refers to one week's earnings of employees for the reference period attributable to award, standard or agreed hours of work. It is calculated before taxation and any other deductions (e.g. superannuation, board and lodging) have been made. Included in ordinary time earnings are award, workplace and enterprise bargaining payments, and other agreed base rates of pay, over award and overagreed payments, penalty payments, shift and other allowances; commissions and retainers; bonuses and similar payments related to the reference period; payments under incentive or piecework; payments under profit sharing schemes normally paid each pay period; payment for leave taken during the reference period; all workers' compensation payments made through the payroll; and salary payments made to directors. Excluded are overtime payments, retrospective pay, pay in advance, leave loadings, severance, termination and redundancy payments, and other payments not related to the reference period.
Weekly total earnings	Weekly total earnings of employees is equal to weekly ordinary time earnings plus weekly overtime earnings.

SELF-HELP ACCESS TO STATISTICS

<i>CPI INFOLINE</i>	For current and historical Consumer Price Index data, call 1902 981 074 (call cost 75c per minute).
<i>DIAL-A-STATISTIC</i>	For the latest figures for National Accounts, Balance of Payments, Labour Force, Average Weekly Earnings, Estimated Resident Population and the Consumer Price Index call 1900 986 400 (call cost 75c per minute).
<i>INTERNET</i>	www.abs.gov.au
<i>LIBRARY</i>	A range of ABS publications is available from public and tertiary libraries Australia-wide. Contact your nearest library to determine whether it has the ABS statistics you require.

WHY NOT SUBSCRIBE?

<i>PHONE</i>	+61 1300 366 323
<i>FAX</i>	+61 03 9615 7848

CONSULTANCY SERVICES

ABS offers consultancy services on a user pays basis to help you access published and unpublished data. Data that is already published and can be provided within 5 minutes is free of charge. Statistical methodological services are also available. Please contact:

<i>INQUIRIES</i>	<i>City</i>	<i>By phone</i>	<i>By fax</i>
	Canberra	02 6252 6627	02 6207 0282
	Sydney	02 9268 4611	02 9268 4668
	Melbourne	03 9615 7755	03 9615 7798
	Brisbane	07 3222 6351	07 3222 6283
	Perth	08 9360 5140	08 9360 5955
	Adelaide	08 8237 7400	08 8237 7566
	Hobart	03 6222 5800	03 6222 5995
	Darwin	08 8943 2111	08 8981 1218

POST Client Services, ABS, PO Box 10, Belconnen ACT 2616

EMAIL client.services@abs.gov.au



2630200008995
ISSN 1301-0592

RRP \$18.00